

TRUE

TEMPORAL REASONING UNIVERSAL ELABORATION

True System dynamics software

MANUAL Part 04

Tunings

Last release 2013/04/02

Author : Patrick Houel

www.true-world.com

Contents

I – "TUNINGS" WINDOW.....	3
A) Creating a "Tuning" window.....	3
B) "Tuning" window.....	4
1. Description.....	4
2. Adjusting the dimensions and the number of tunings.....	5
3. Assigning a stock to a tuning	6
4. Sharing.....	8
5. "Elements" plan.....	10

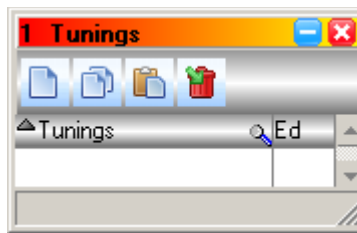
I – "TUNINGS" WINDOW

The "Tuning" window allows creating Tunings (potentiometers) for initializing the initial value of the stocks.

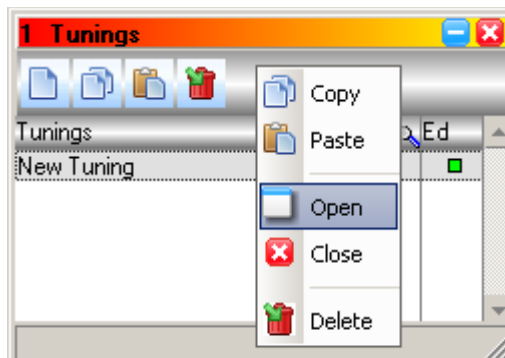
A) Creating a "Tuning" window

- ❑ Select option "Tunings" from the main menu "Windows" or press key T

"Tunings" Window



- ❑ Select the "New" button from the "Tunings" window
- ❑ Enter the name and validate
- ❑ To rename, press "F2" key or the "Enter" key



Opening a "Tuning" window :

- ❑ Click on the green led "Ed" to open the "Tuning" or :
- ❑ Select the "Open" option from the context menu
- ❑ The led turns red when the window is opened

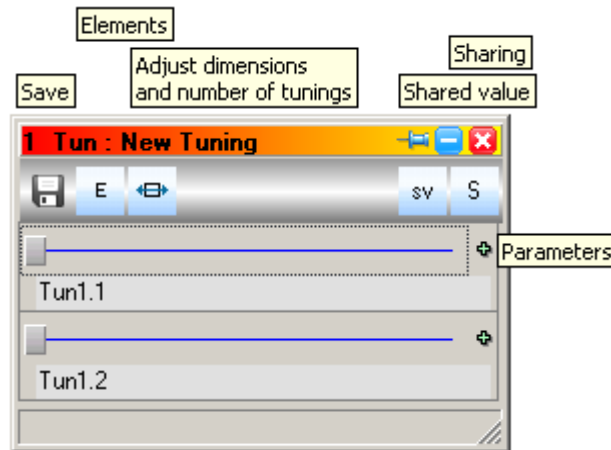
Duplicating the selected Tuning window :

- ❑ Select the "Tuning" window from the "Tunings" table
- ❑ Select the "Copy" and "Paste" option from the context menu or :
- ❑ Click on the "Copy" and "Paste" buttons or press and hold keys "Ctrl"+"C" and "Ctrl"+"V" keys

B) "Tuning" window

1. Description

Tuning window



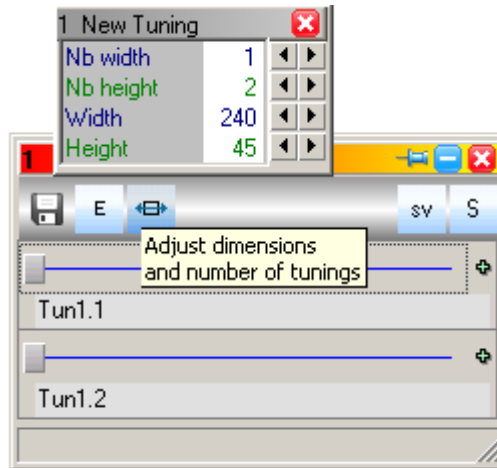
Buttons:

- ❑ "Save"
 - saves the value if the tunings
- ❑ "Elements"
 - displays the tunings in a table together with their values
- ❑ "Adjust dimensions and number of tunings" :
 - adjusts the size of the tunings
 - adjusts the number of tunings in width and height
- ❑ "Shared value"
 - adjusts and enables the sharing value
- ❑ "Sharing"
 - enables or disables the sharing mode of the values :
 - the sum of the value of the tunings will be equal to the sharing value
- ❑ "Parameters"
 - sets the minimum and maximum values and the step of the tuning

2. Adjusting the dimensions and the number of tunings

- Select the "Adjust dimensions and number of tunings" button

"Adjust..." window

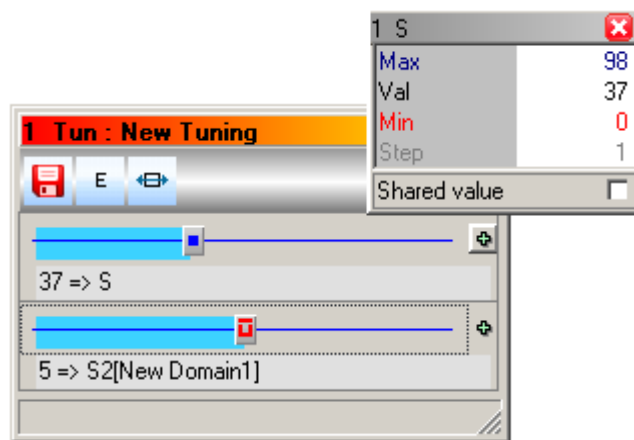


- Adjusting the spins :
 - nb width : number of tuning in the window's width
 - nb height : number of tuning in the window's height
 - width : width of one tuning
 - height : height of one tuning

3. Assigning a stock to a tuning

- ❑ Drag and drop one stock from the model or the Elements window over :
 - one tuning or
 - one line of the table of the elements (click on the "E" button to select the Elements plan)
- ❑ Adjust the parameters of the tuning with the mouse or in the "Val" (Values) cell from the table of elements
- ❑ Click the green button "+" and adjust the parameters

Adjusting the parameters



Parameters

- ❑ Line 1 : maximum value
- ❑ Line 2 : current value
- ❑ Line 3 : minimum value
- ❑ Line 4 : step increment
- ❑ Line 5 : enables sharing value for this tuning

Tuning color

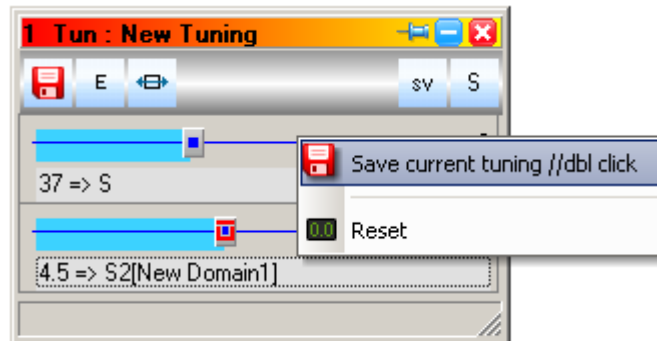
- ❑ Blue : positive value
- ❑ Red : negative value

Indicator on the cursor of a tuning

- ❑ Blue square : the value of the tuning is different from the current value of the stock, you must save the tuning
- ❑ "u" red + red bar : the initial value for the domain of the vectorized stock assigned to this tuning is disabled, meaning you must consult the "Manual Part 06 - Vectorization"

Popup menu of one tuning

Popup menu of one tuning

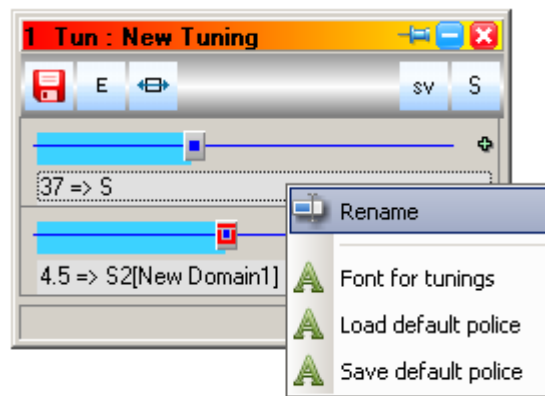


Options

- ❑ "Save current tuning //dbl click" : applies the value of the tuning to the assigned stock
- ❑ "Reset" : resets the tuning with the default value

Popup menu of the label of one tuning

Popup menu of the label of one tuning



Options

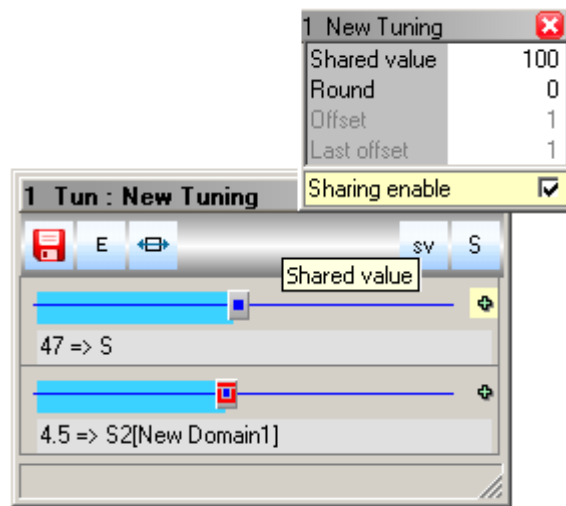
- ❑ "Rename" : changes the name of the tuning
- ❑ "Font" : selects and saves the font for the label of the tuning

4. Sharing

One value can be shared by several tunings.

Adjusting the shared value

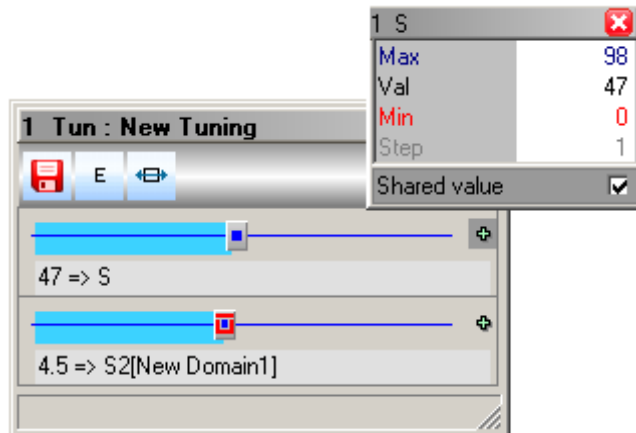
- ❑ Click on the "sv" (Shared value) button to adjust the shared value



- ❑ Enter the shared value in the "Shared value" field
- ❑ Enter the Round : number of decimal of offset
- ❑ Check the box "Sharing enabled" (a yellow background will be displayed)
- ❑ Enable the "Sharing" option of the tunings (see below)
- ❑ Modify the value of one tuning, the other values being automatically adjusted

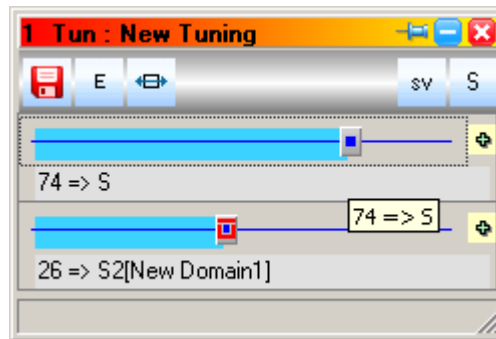
Enable the Sharing option of the tunings to share the shared value

- Click on the green button + Adjust the parameters of the tuning :
 - check the boxt "Shared value" in the Adjust window
- or
- check box "S" in the table of the elements to be shared



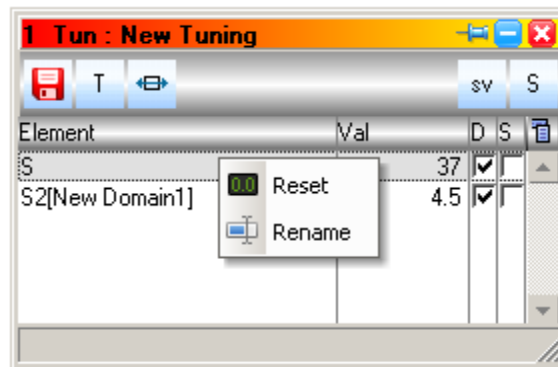
Adjust a tuning that shares the shared value

- When adjusting one tuning, the others tunings are modified until the sum of all the tunings is equal to the share value



5. "Elements" plan

"Elements" plan



- Note : the stock "S" is assigned to the first tuning (Tun1)

Columns

- ❑ "Element" : name of the stock assigned to the tuning, or "Tun x"
- ❑ "Val" : current value of the tuning
- ❑ "D" : displays or not the tuning in the "Tunings" plan
- ❑ "S" : the value of the tuning is shared